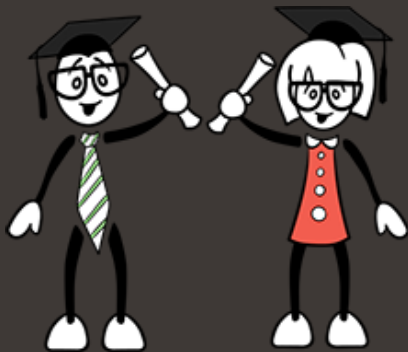


**ICSE CLASS 10**

# PRELIM PAPERS

OF **BEST SCHOOLS** FOR 2018 BOARD EXAMS

**FREE SAMPLE PAPER – PHYSICS**



**Digital  
Download**

GREENLAWNS HIGH SCHOOL  
PRELIMINARY EXAMINATION YEARSUBJECT : PHYSICS  
TIME : 2 HOURSCLASS : X  
MARKS : 80

Note - Answers to this paper must be written on the paper provided separately. You will not be, allowed to write during the first 10 minutes. This time is to be spent in reading the question Paper. The time given at the head of this paper is the time allowed for writing the answers. Section I is compulsory. Attempt any 4 questions from Section II. The intended marks for questions are given in the bracket ( ).

## Section I (40 Marks) Compulsory.

**Question 1**

Q 1 A) If 'm' is the mass of a body, 'v' its velocity & 'p' the momentum then write a relationship between change in momentum, mass & velocity of the body when -

- 'v' is almost equal to 'c'. the velocity of light.
- 'v' is very less as compared to 'c' the velocity of light.

B) State the energy changes that take place in the following when they are in use.

- A photovoltaic cell
- A thermocouple

C) A person having myopic eye uses a concave lens of focal length 50cm. What is the power of the lens?

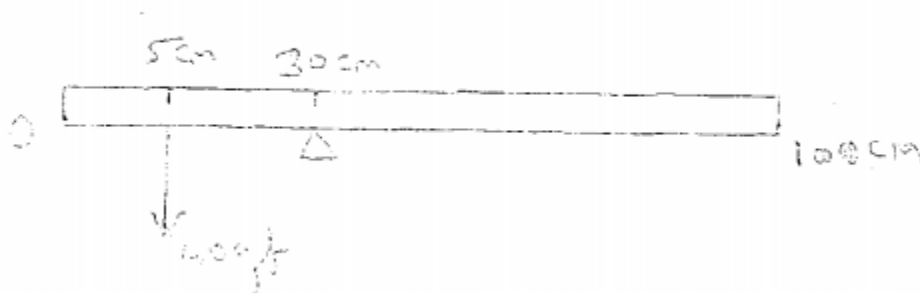
D) Fill in the blanks:

When a beam of white light enters a prism \_\_\_\_\_ and \_\_\_\_\_ take  
Place at the first & second of it respectively.

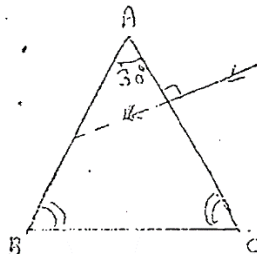
E) What is resistance offered by a 100 W bulb if the line voltage is 220V

**Question 2**

A) A uniform metre rule is in equilibrium position as shown in the diagram below Calculate the mass of the metre rule.



B) Copy & complete the following diagram to show the path of ray of monochromatic light as it enters & emerges out prism. Mark the angles wherever necessary. ( $\angle = 42^\circ$ )



C) It is said that work done by a machine is always less than the works done the machine, then what is the use of the machine? (Give 2 points)

D) State two ways how electromagnet can be made stronger.

**Question 3**

a) Calculate the kinetic energy of a body of mass 0.1 kg & momentum 40kg ms/s.

b) State the factor which determines: -

- i) Loudness of sound heard.
- ii) quality of note.

c) Choose the correct option.

i) According to new convention, the neutral wire is \_\_\_\_\_.

- a) Red b) brown c) light blue d) green

ii) The other way of writing  $AV^{-1}$  is \_\_\_\_\_.

- a) ohm b)  $mho^{-1}$  c) siemen d) coulomb

d) Define specific heat capacity & give its SI unit.

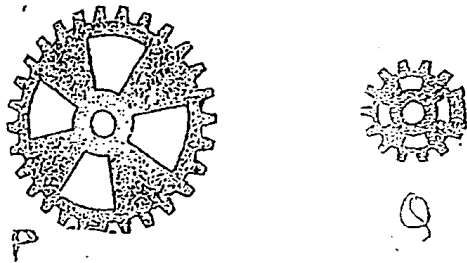
e) The nucleus of element X (Atomic number 92 & atomic mass number 335) emits  $2\alpha$  &  $3\beta$  particles. The final nucleus is Y. Find a & b.

**Question 4**

a. Distinguish between A.C generator & D.C motor (Give any 2 points)

b. Why are infrared radiations preferred over ordinary visible light for taking photographs in fog?

- c) Gear P & Q are used in combination for an experiment. Suggest which should be used as driving gear & which one should as a driven gear for obtaining the following results.
- Gain in speed
  - Gain in torque



- d) If a rat & an elephant both run with the same kinetic energy, who will win the race? Why?
- e) In terms of radioactivity state which of the emissions are
- the most ionizing
  - Not deflected by electric or magnetic field.

### Section II

Attempt any 4 questions from this section.

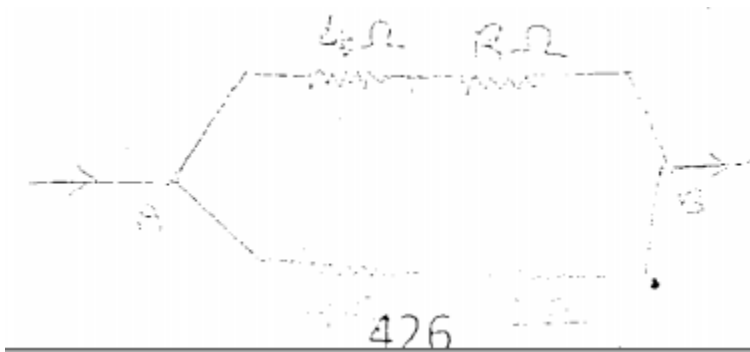
Q.5

(3+3+4)

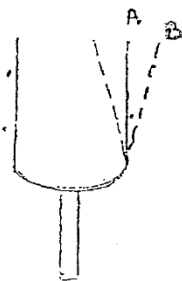
- a) The refractive index of air with respect to glass is defined as  $\mu = \frac{\sin i}{\sin r}$
- Write down a similar expression for  $\mu$  in terms of angles  $i$  &  $r$ .
  - In Q5- I above if  $\angle r = 90^\circ$ , what is corresponding  $\angle i$  called.
  - What is the physical significance of  $\angle i$  as in the part Q 5 ii above.
- b) Draw a neat labelled diagram of combination of pulleys using one fixed pulley & other movable pulleys having mechanical advantage = 4. Show the directions of load, effort & tension in each strand.
- How much is the effort in equilibrium position for the same system?
- c) A 30g ice cube of  $0^\circ \text{C}$  is dropped into 100g of water at  $30^\circ \text{C}$ . Calculate the final temperature of water when the whole ice cube melted. Latent heat of ice =  $80 \text{ calg}^{-1}$ , specific heat capacity of water =  $1 \text{ calg}^{-1} \text{ }^\circ \text{C}^{-1}$

### Question 5

- a) Observe the figure given below. If the resistance between A & B is  $4\Omega$ , find the value of R.



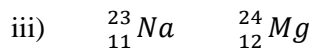
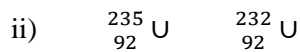
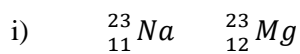
- b) The diagram shows a vibrating tuning fork. It takes  $\frac{1}{156}$ th of second the move from A to B. Find
- Time period of the wave
  - Frequency of the wave
  - Is the wave audible to us?



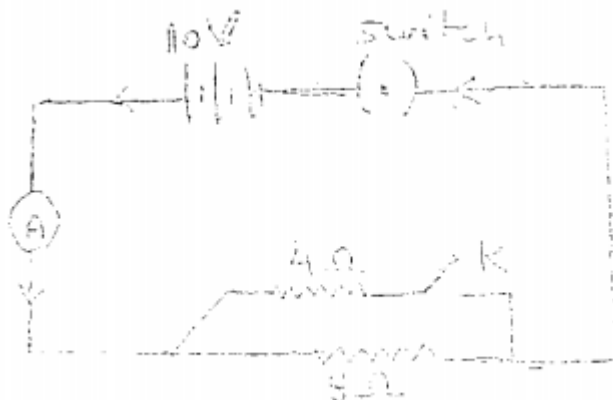
- C)
  - Give any 2 factors affecting thermionic emission.
  - Give any 2 examples of the ground radiations.

**Question 7**

- a) Classify the following pairs of elements in Isotone, Isotope & Isobar.



- b) Observe the circuit diagram given below & calculate the reading of A when
- K is opened
  - K is closed

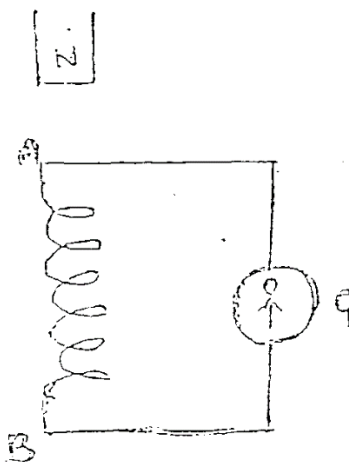


- C) i) Draw a ray diagram to show how a converging lens can form an image beyond  $2F_2$   
 ii) Write the nature & the size of the image formed in Q7 C -j.

**Question8**

(3+3+)

- a) Briefly explain a quality/property of any 3 materials that surround a calorimeter, which reduce the heat transfer.
- b) Give scientific reasons.
1. A couple is needed while tightening the cap of an inkpot.
  2. The base of an electric iron is made thick.
  3. The sky appears black in the absence of atmosphere.
- c) Observe the diagram given below & answer the questions that follow.



- i) What will you observe when: -
- a) the magnet is dropped into the coil.
  - b) the number of turns of the coil is increase?
- ii) What will be the direction of current flowing through the coil when the magnet is dropped in?
- iii) State the law which explains this observation.

**Question 9**

(3+3+4)

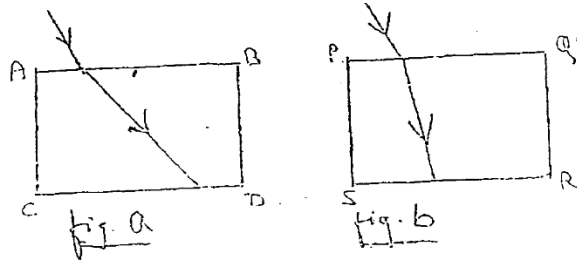
- a) Draw a neat labelled ray diagram to show the real & apparent position of an air bubble that is trapped in a rectangular glass block when it is viewed from directly above.

From your diagram write an expression that gives refractive index of this glass block.

- b) State any three properties that are common to & shown by both beta rays & cathode rays.
- c) i) Sometimes when a vehicle is driven, a rattling sound is heard. Explain briefly why this happens  
 ii) Give the name of the phenomenon taking place.  
 iii) Suggest one way by which rattling could be stopped

**Question 10**

- a) The figure given below shows a monochromatic ray of light entering a glass block from air. Which figure is accurate? Why? Also name the phenomenon shown in the figure.



- b) Tom fires a gun towards a hill & hears its echo after 5 second. He then moves 320 m towards the hill & fires his gun again. This time he learns he hears the echo after 3 second. Calculate the velocity of sound
- c) Define
- Dispersion
  - Super conductor
  - Global warming
  - Thermionic emission

This Sample paper is part of **Exam18's ICSE 10th Prelim Papers of Best Schools for 2018 Board Exams (All Subjects) book**, available exclusively on [Exam18.com](http://Exam18.com)

**Do you want to score 90%+ in Board Exams?**

**[Get all the papers and start practicing →](#)**

(clicking on this link will take you to [www.exam18.com](http://www.exam18.com))

Depending on how much you wish to practice, this book is available in multiple options.

You can get question papers in sets of 5 schools, 10 schools, 15 schools or 20 schools.

## PRICING

SR. NO	NO. OF SCHOOLS	DIGITAL DOWNLOAD (PDF)	PRINTED BOOK	<a href="#">ORDER NOW</a>
1	<b>5 Schools</b> 50+ Question Papers	<b>Rs. 249</b> Download Instantly	<b>Rs. 499</b> FREE delivery across India	<b>Payment Options</b> <ul style="list-style-type: none"> <li>• COD</li> <li>• Debit Card</li> <li>• Credit Card</li> <li>• Net Banking</li> <li>• Bank deposit</li> </ul> <b>Delivery Time</b> <b>2 – 4 days</b> <b>across India</b>
2	<b>10 Schools</b> 100+ Question Papers	<b>Rs. 499</b> Download Instantly	<b>Rs. 999</b> FREE delivery across India	
3	<b>15 Schools</b> 150+ Question Papers	<b>Rs. 749</b> Download Instantly	<b>Rs. 1499</b> FREE delivery across India	
4	<b>20 Schools</b> 200+ Question Papers	<b>Rs. 999</b> Download Instantly	<b>Rs. 1999</b> FREE delivery across India	

# [ORDER NOW](#)

## MORE INFORMATION ABOUT PRELIM PAPERS

### WHAT ARE PRELIM PAPERS?

ICSE Prelim papers are question papers from pre-board exams conducted in various ICSE schools few months before the final board exam. These question papers provide a great way to practice questions that are expected to come in the Board exams.



## **WHO PREPARES THESE PRELIM PAPERS?**

Prelim papers are prepared by senior teachers of ICSE Schools who are experts in their subjects and have vast knowledge about ICSE Board Exam trends and paper patterns. They have been teaching for over 15 to 20 years and preparing their students to score best overall percentage.

## **HOW DOES PRELIM PAPERS HELP?**

Prelim Papers brings together all the rich experience and expertise of these teachers to you so you can struggle less and study the right thing for your board exams. They cover many questions that are usually not found in textbooks (Ever wonder where your teachers get those tricky questions in class tests? That's right, it is most likely from these Prelim Papers!). Having this book with you while you study for board exams is very helpful because you can go over all the possible questions in this book after studying a chapter to make sure you didn't miss something.

The questions are usually given in variety of *tricky, twisted and turned around ways*, showing the type of questions you might expect in your exam, and allow you to practice answering them to avoid surprises in the final board exam. It will also bring you lot of confidence and positive energy to do well in your board exams. Who doesn't want that?

## **HOW MUCH CAN I SCORE WITH PRELIM PAPERS?**

Most students who prepare for Board Exams with help of prelim papers **score above 90% in Board exams.**

## **WHICH SUBJECTS ARE INCLUDED?**

Subjects such as English Language, English Literature, Mathematics, History/Civics, Geography, Physics, Chemistry and Biology are included in this ICSE Prelim Papers package. There are also some question papers of Computer Applications, Commercial Applications, Environmental Science, Art, Technical Drawing, Physical Education

## WHY IS THIS BOOK CALLED A PACKAGE?

When you buy a book from Exam18, it doesn't end there. Our goal is to make sure you use the book effectively and we assist you do it well with the help of special tips, tricks and guidelines sent via Email and SMS periodically until the Board Exams. Also, our Student Support Team is available 24×7 to help you make the best out of your Exam18 books. This all-inclusive product and service is called a package. The cost given here includes everything, even delivery fee.

Any questions? Call our Helpline **07666303006**  
or email us on [care@exam18.com](mailto:care@exam18.com)

**Do you want to score 90%+ in Board Exams?**

**[ORDER ALL THE PAPERS AND START PRACTICING →](#)**

(clicking on this link will take you to [www.exam18.com](http://www.exam18.com))



**FREE DELIVERY ACROSS INDIA**

**NO HIDDEN CHARGES**

**DELIVERY GUARANTEED IN 2-4 DAYS**

**CASH ON DELIVERY AVAILABLE**

**100% SAFE & SECURED**

**OUR OFFICE IS IN MUMBAI**